

TRANSPORT

JACKSON
TRUCKS
TRAILERS
EQUIPMENT





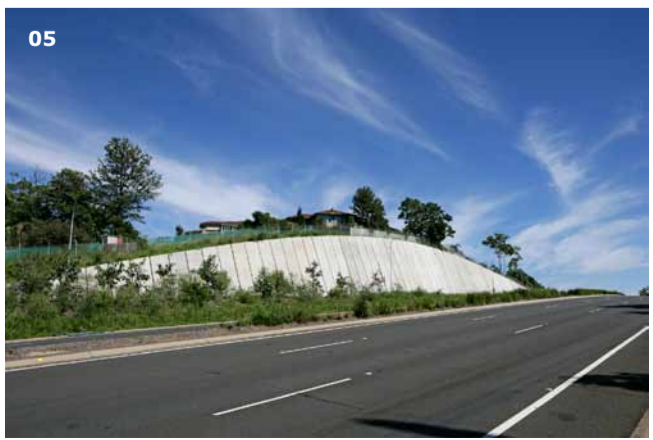
WWW.JACKSONTEECE.COM



Long considered to be the preserve of engineers, it is now recognised that the design of major infrastructure and road works also greatly benefit from the design contributions of urban designers and architects.

Jackson Teece has extensive, award-winning experience over many years in working closely with clients in the public and private sector on major projects in New South Wales, Queensland and the Australian Capital Territory. Our clients acknowledge Jackson Teece for its high standard of professionalism in delivering results which meet stakeholder objectives, achieve a high quality design, are sensitive to community needs and are cost effective.

Cover North West Transitways,
Sydney, NSW
01 Ballina Bypass, Pacific Highway
Upgrade, NSW



OUR SERVICES

Our passion for urban design is applied across the full spectrum of public infrastructure works, including:

- Major Infrastructure
- Road Design and Upgrades
- Transit-Oriented Development
- Planning of Transport Systems
- Public Transportation Networks- Bus and Rail
- Station Area Planning and Design
- Pedestrian and Vehicular Bridges
- Tunnels
- Street Furniture and Signage
- Public Artwork

The Jackson Teece design philosophy is based on the inter-connected activities of research, collaboration and a creative approach to problem solving. Our skilled multi-disciplinary team is well-positioned to understand the significance of varying contexts; the engineering, safety and maintenance issues; and the implications of design on the budget. This enables us to deliver robust project outcomes that are:

- A good fit with the natural, built and cultural contexts
- 'Best for Project' in terms of outcomes that are in-keeping with project objectives
- A positive contribution to the surrounding community
- An interesting, stimulating and safe user experience
- Best value for the money expended



The practice and individual staff members embrace collaboration, evolution and change. We actively seek to develop networks which incorporate specific areas of expertise appropriate to each individual project.

We provide services across a range of project stages including:

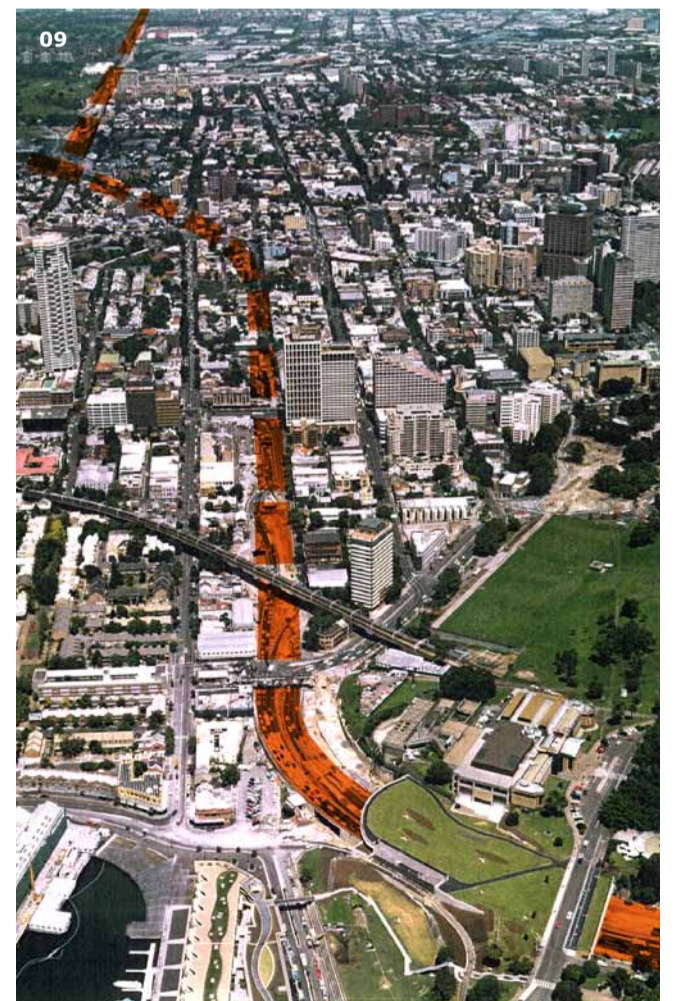
- Route selection
- Design Options studies
- Preliminary Design and Visual Impact Analysis (Environmental Assessment)
- Concept and Detail Design and Documentation
- Construction Inspection and Review
- Design Guidelines
- Strategic Plans and Master Plans
- Feasibility Studies
- Design and Construction Independent Review

We collaborate with diverse expertise in the design process to create robust designs

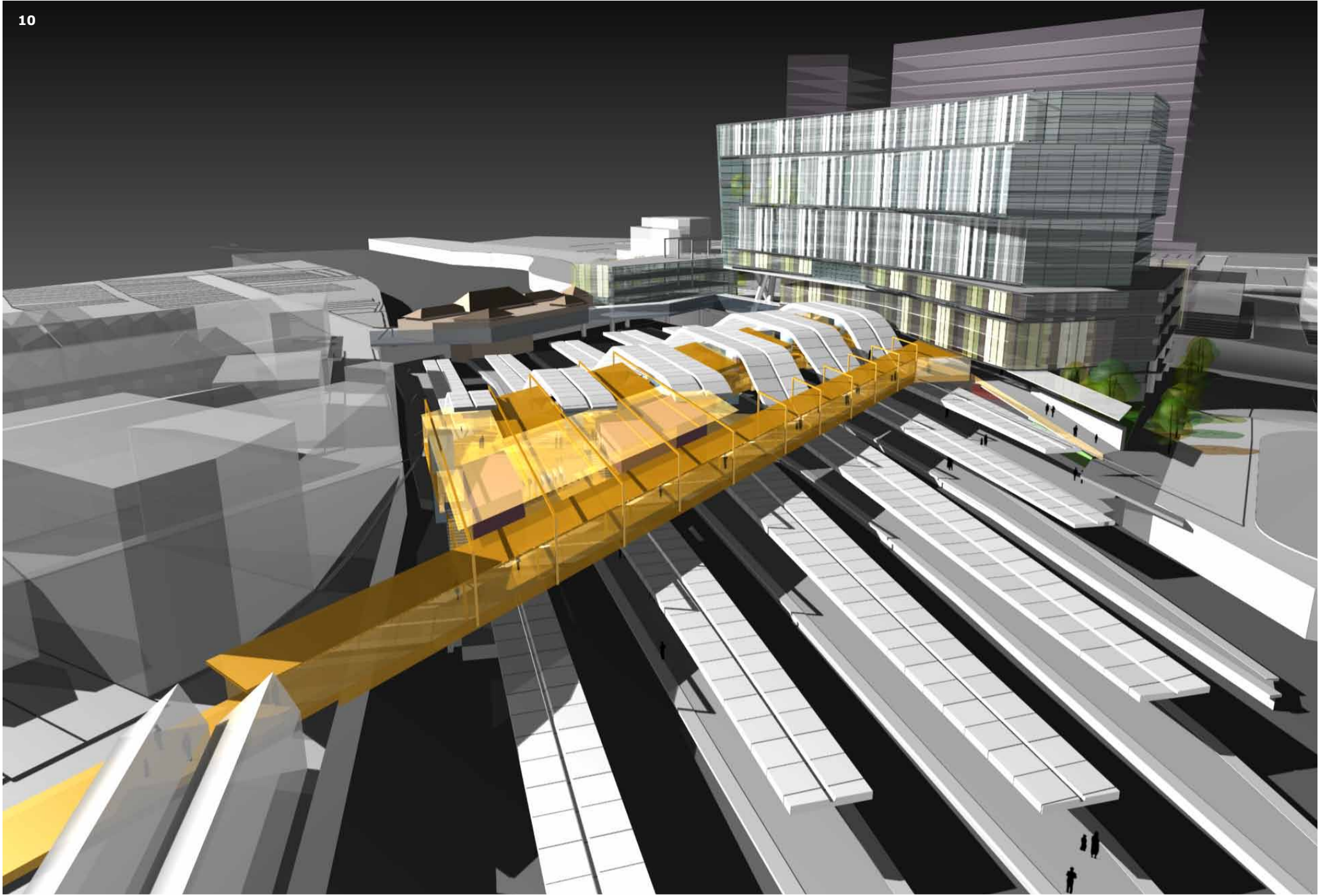
OUR PHILOSOPHY

The essential project brief is constituted by our client's requirements, engineering and maintenance requirements, the work programme, and statutory codes directing performance. Beyond the essential lie design possibilities which are dictated by the physical and cultural context and the specific design challenges.

The test of innovation is 'What is Best for Project'? A design proposition gains strength and authenticity through its sensitivity to place - both physical and cultural. All of our design ideas are underpinned by place-making through the consideration of climatic, social, cultural and environmental factors.



06 - 08 Lane Cove Tunnel, Sydney, NSW
09 Eastern Distributor, Sydney, NSW



OUR STRENGTHS

Experience

Our key strengths in the area of infrastructure-related urban design result from our longstanding experience in working with the private and public sectors and collaboration with other fields such as structural and civil engineering, landscape architecture, ecology, geotechnics, drainage, traffic and safety, and maintenance and construction.

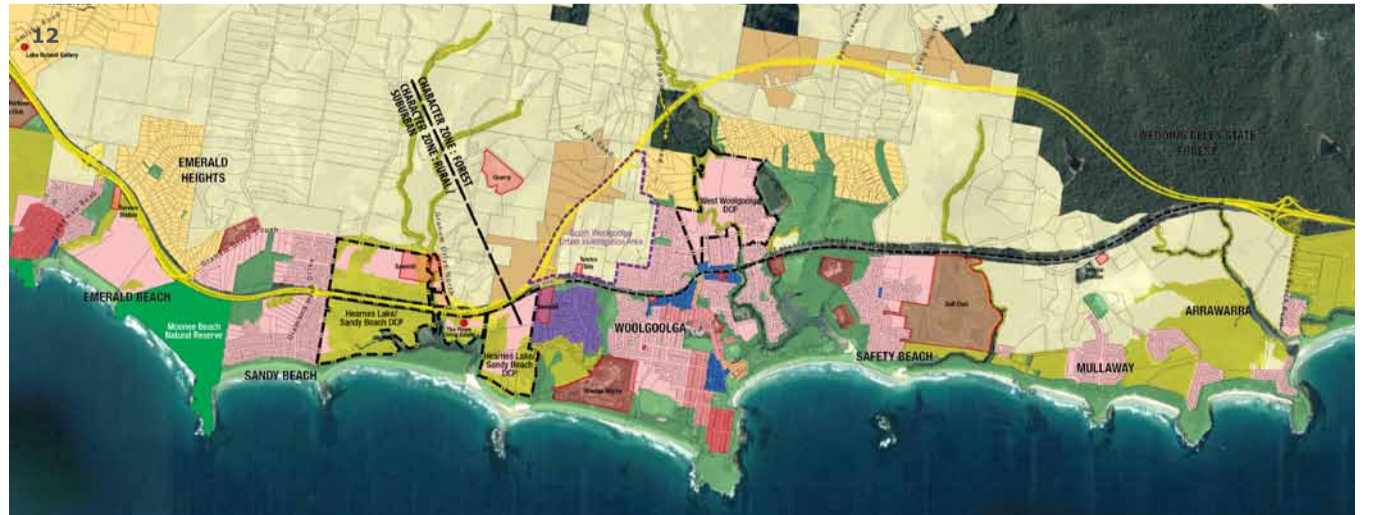
Based on the objectives, expectations and context of each project, we are able to effectively crystallise the appropriate design approach that will guide the final design and presentation of the project. Our experience allows us to assist in achieving value for money due to our understanding of the budget implications of design decisions. It also enables us to contribute to identifying opportunities to refine the overall design.

We have experience in working within Design & Construct, Alliance, Design Only and Construct Only Contracts types. Our effective management of the delivery process and collaborative approach to design development enables us to achieve key milestones in the project programme.

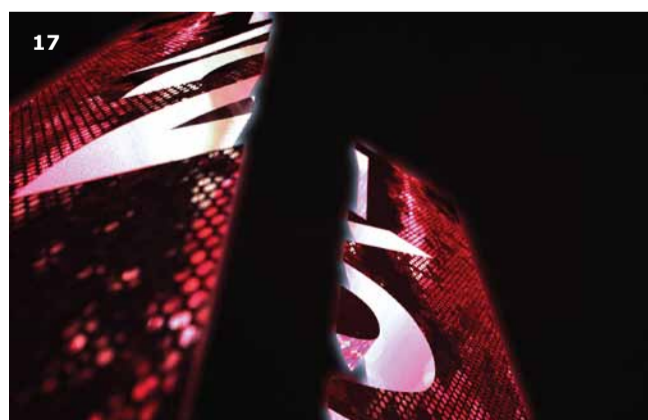
In addition, we work closely with the Community Liaison teams in developing consultation material and presenting the design to the community.



Each project we undertake begins with the consideration of both the essential and the potential



10 Redfern Railway Station Development Strategy, Sydney, NSW
 11 Ballina Bypass, Pacific Highway Upgrade, NSW
 12 Sapphire to Woolgoolga, Pacific Highway Upgrade, NSW



13 Tumarumba Bridge on the Hume Highway for the Northern Hume Alliance, NSW
14 Tarcutta Town Entry Signage, Hume Highway, NSW
15 Rest Area Signage Structure, NSW

16 Gateway to Ballina at the Teven Interchange for the Ballina Bypass Alliance, NSW
17 Tarcutta Gateway Artworks concept, Hume Highway, NSW
18 Three pedestrian overbridges, Eastern Distributor, Sydney, NSW

Teamwork

We collaborate with a diverse range of disciplines and professionals which is reflected in the well-informed and robust nature of our ideas and solutions. Ultimately our goal is to deliver a design that supports our clients' endeavours and contributes positively to the fabric of the broader community.

Presentation Material and Graphics

Jackson Teece has an in-house graphics capability which enables us to produce high-quality display materials and models. We employ 3D computer modelling and hand drawn perspectives extensively as a design tool in order to transform design ideas into an immediate visual representation of the finished structure, in the form of images, animated sequences and virtual tours. We also prepare photomontages, options studies and before & after scenarios which have been very helpful in explaining design concepts to the community.

Fusing urban design, master planning and architectural expertise to propose elegant infrastructural solutions



EXPERTISE

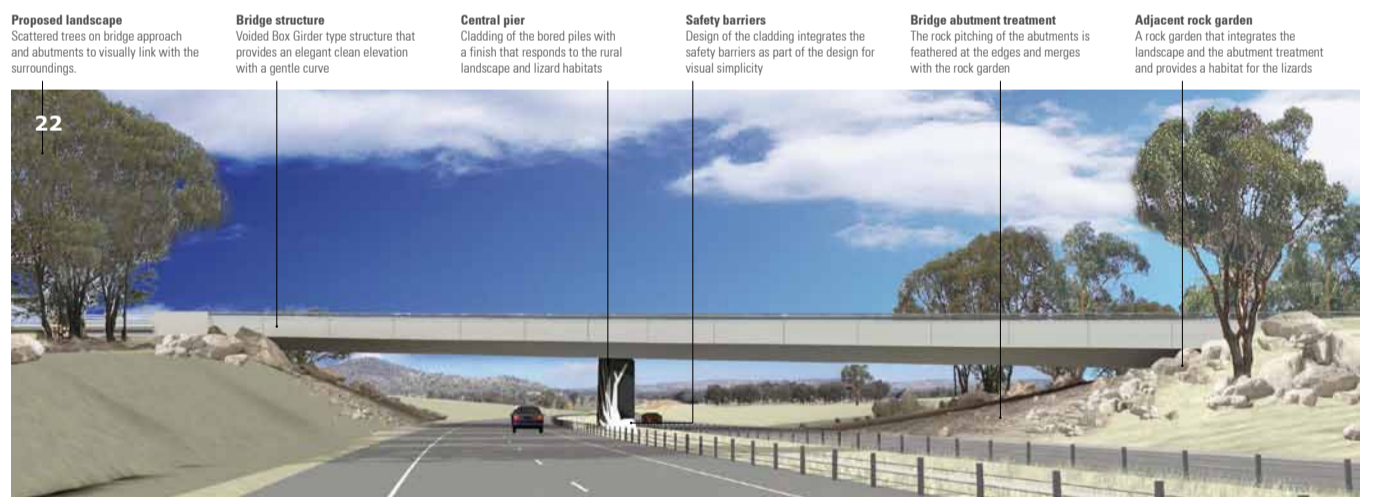
Major Infrastructure and Road Design

Our expertise in transport planning is evident in the successful outcomes achieved in a broad range of projects, from major infrastructure projects such as the Pacific Highway Upgrades to small scale projects such as the implementation of noise walls at the Domain in Sydney.

The urban design of roads is a core competency of Jackson Teece. We look beyond the limits of the road corridor to understand the land uses, natural environment and wider planning framework in which the road is situated to ensure that the design of the road maximises opportunities to create a positive public domain for adjacent communities. As part of this, our designs imbue equal importance to the function of roads as a public realm for pedestrians, bicycles and public transport, in addition to the private vehicle.

Public Artwork

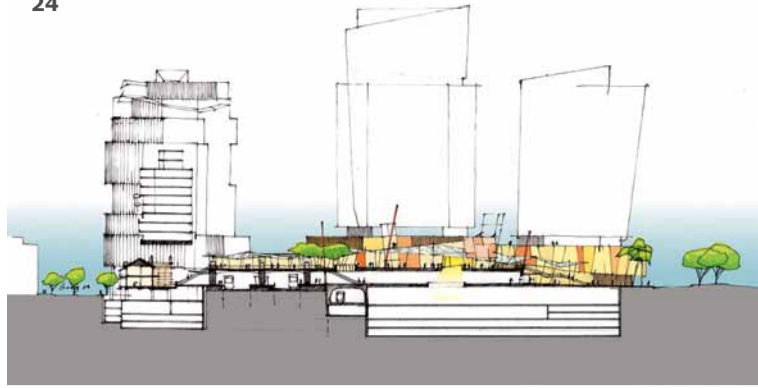
We design and deliver artwork pieces from concept design to installation. The works may be stand-alone pieces, integrated with the public space design, or integrated with various functional structures. Our artworks are designed to tell a story, delight and enrich the experience of public space.



19 Sapphire to Woolgoolga, Pacific Highway Upgrade, NSW
20 Transit Boulevard Road Type Guidelines, NSW
21 Bridge pier design options study

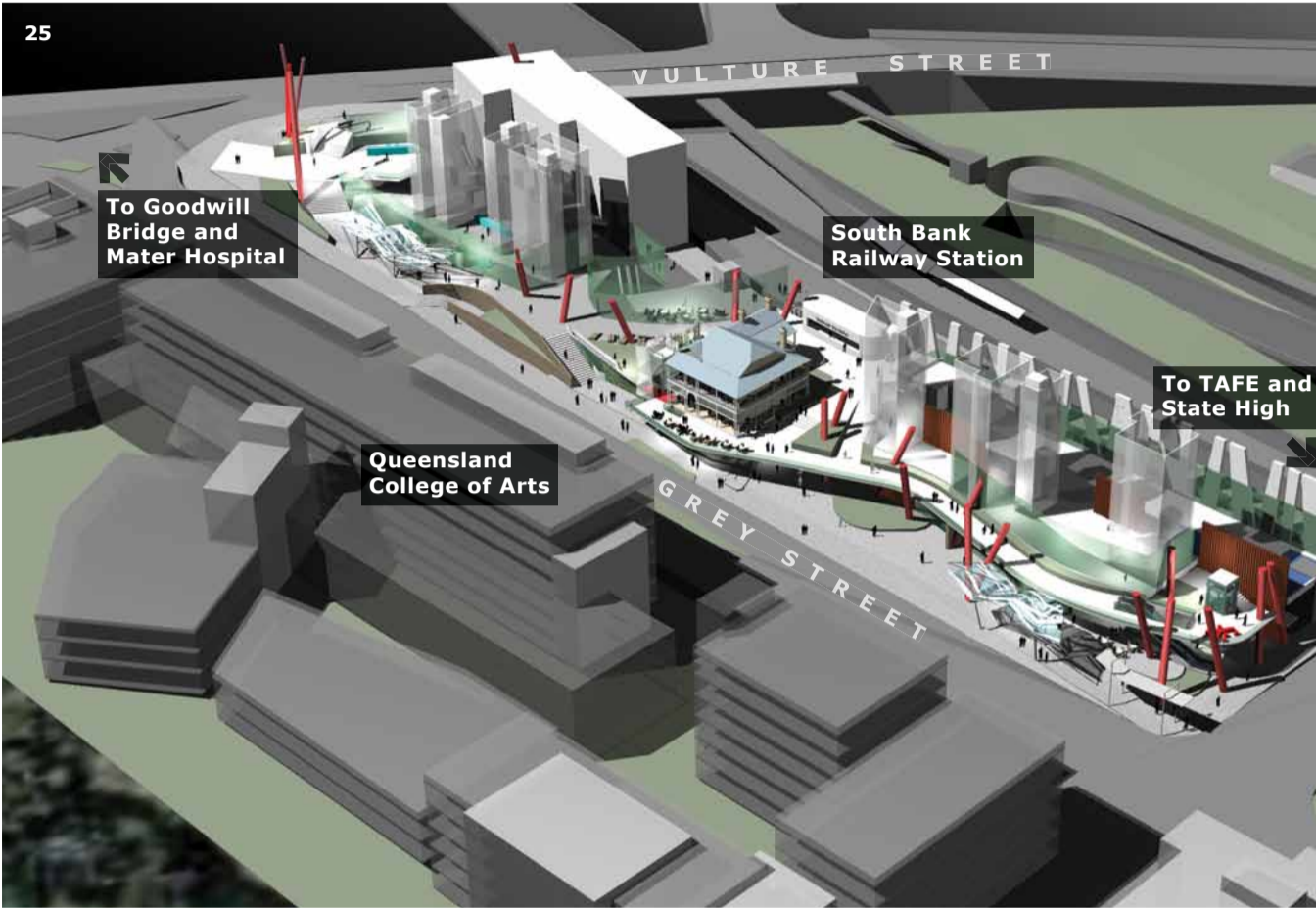
22 Tumbarumba Bridge on the Hume Highway for the Northern Hume Alliance, NSW
23 Typical transparent noise wall detail

24



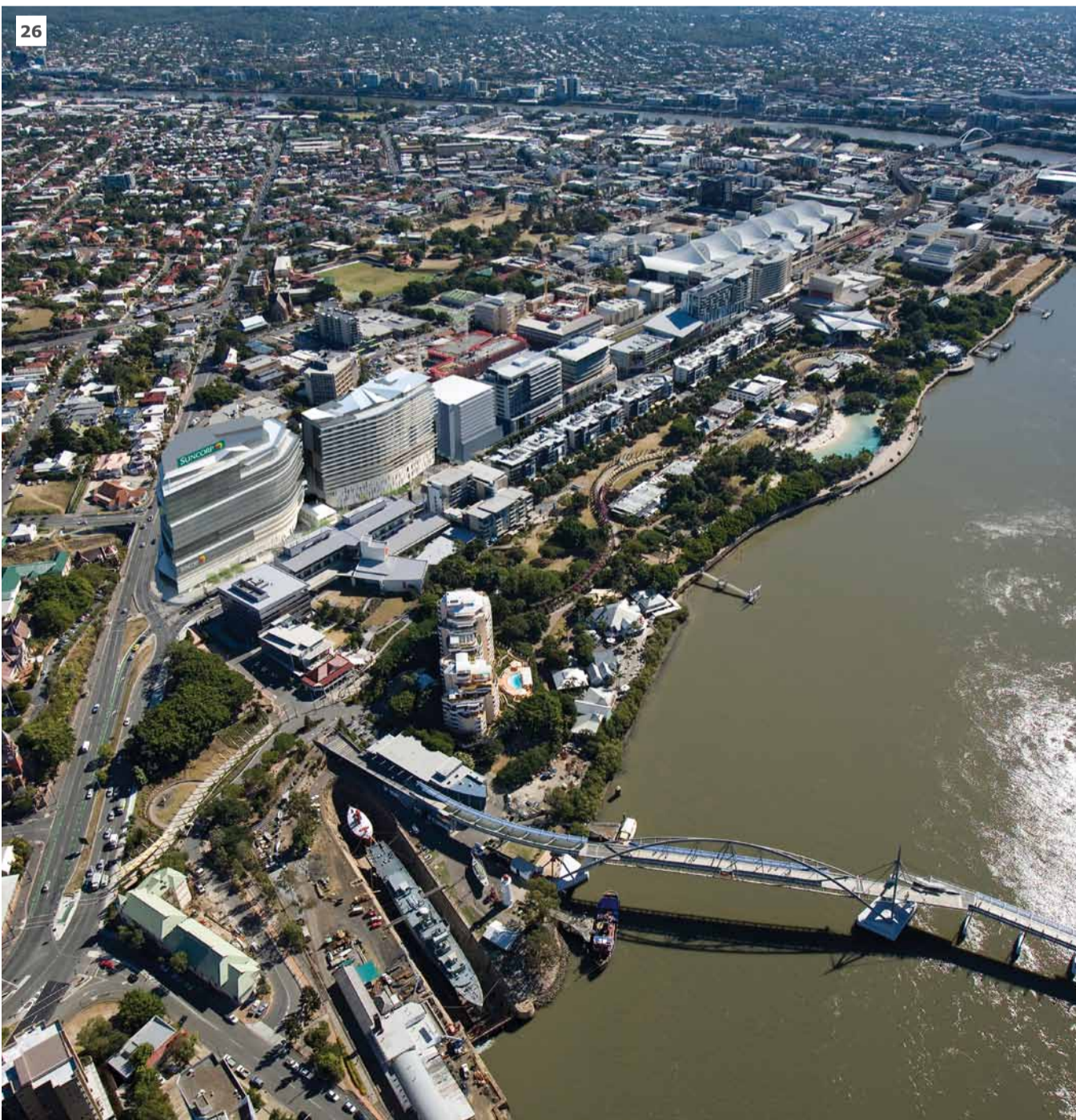
24 South Bank Transit Oriented Development, Brisbane, QLD
 25 + 26 Southpoint Mixed Use Development, South Bank, QLD

25



The spirit of collegial collaboration is the hallmark of our approach

26



Client Service

Under the direction of Nadira Yapa, Director of Urban Design, we practice a culture that propagates a high standard of client service. The enthusiasm and professionalism of the individuals in our team has often led to achieving project outcomes that break the mould and add value to the client brief.

Many of our urban designers are also qualified architects who work closely with the Jackson Teece architectural team. This dual understanding of scales of development – the design of individual buildings and the spaces that surround them, and the understanding of how large-scale developments fit within a regional culture – makes us uniquely qualified to offer our clients an in-depth service.

Technical Capability

The breadth and diversity of expertise at Jackson Teece ensures that each project is rigorously investigated to develop comprehensive solutions that elegantly resolve the often contradicting demands of a project. Our staff has long standing experience in the field and is highly familiar with current requirements that guide the design framework. The use of 3-D modelling is a core part of our design approach, allowing us to better assess the merits of our concept ideas as proposals are being developed.

SELECTED PROJECTS

Jackson Teece has extensive experience in delivering Urban Design and Architecture for roads, bridges, rail and other infrastructure projects. Delivery methods include Alliance, Design Only and Design & Construct Contracts. Information on selected projects are listed below:

DATE	PROJECT	CLIENT	ROLE
MAJOR INFRASTRUCTURE			
2011 – current	Gerrington Upgrade Princes Highway	Fulton Hogan SMEC Joint Venture	Concept, Detailed Design and Construction
2010 – current	Sapphire to Woolgoolga Pacific Highway Upgrade	Leighton Fulton Hogan Joint Venture	Concept, Detailed Design and Construction
2010 – 2012	Holbrook Bypass Hume Highway Upgrade	Roads and Maritime Services	Noise wall design and documentation of urban design
2009 – current	Kempsey Bypass Pacific Highway Upgrade	Kempsey Bypass Alliance	Concept, Detailed Design and Construction
2008 – 2011	Tarcutta Bypass Hume Highway Upgrade	Tarcutta Hume Alliance	Concept, Detailed Design and Construction
2008	Tarcutta Bypass Hume Highway Upgrade	Parsons Brinckerhoff with Envisage	Environmental Assessment- Urban Design and Visual Impact Assessment
2008	Woomargama Bypass Hume Highway Upgrade	Parsons Brinckerhoff with Envisage	Environmental Assessment- Urban Design and Visual Impact Assessment
2008	Holbrook Bypass Hume Highway Upgrade	Parsons Brinckerhoff with Envisage	Environmental Assessment- Urban Design and Visual Impact Assessment
2008	M5 East Extension	Transurban	Visualisation study
2007 – 2011	Ballina Bypass Pacific Highway Upgrade	Ballina Bypass Alliance	Concept, Detailed Design and Construction
2006 – 2009	Hume Highway Upgrades	Northern Hume Alliance	Concept, Detailed Design and Construction
2005 – 2007	Kempsey to Eungai Pacific Highway Upgrade	Parsons Brinckerhoff	Environmental Assessment- Route selection and Urban Design Assessment
2005 – 2007	Banora Point Pacific Highway Upgrade	Roads and Traffic Authority	Urban design and landscape concepts, visual assessment
2005 – 2006	Westlink M7	Roads and Traffic Authority	Independent verification of design and construction
2005	North-South Bypass Tunnel	Philon	Urban design and master planning advice for development options
2005	Hoxton Park Road Upgrade	Roads and Traffic Authority	Urban design and landscape services
2004 – current	Bulahdelah Bypass Pacific Highway Upgrade	Snowy Mountains Engineering Corporation	Concept, Detailed Design and Construction
2004 – 2007	Windsor Road Upgrade	Windsor Road Upgrade Alliance	Concept, Detailed Design and Construction
2004 – 2006	Wells Crossing to Iluka Pacific Highway Upgrade - Clarence River Bridge	Sinclair Knight Merz	Concept options study and Visual Impact Assessment
2004 – 2006	Wells Crossing to Iluka Pacific Highway Upgrade	Sinclair Knight Merz	Urban design and visual assessment input into route selection
2004	Second Bridge Crossing over the Macleay River	Cardno MBK	Concept design
2003 – 2007	North West Transitways	Leighton Contractors	Concept, Detailed Design and Construction
2004 – 2005	Cahill Expressway Noise Walls	Roads and Traffic Authority	Design and documentation of noise wall
2003 – 2005	The Domain	Roads and Traffic Authority and Royal Botanic Gardens	Tree Replacement and Environmental Enhancement Plan
2003 – 2004	Tuggerah Straight Pacific Highway Upgrade	Roads and Traffic Authority	Urban design input into Tuggerah Straight Report
2003 – 2004	Pacific Highway MR336 Entrance Road Upgrade	Cardno MBK	Landscape and urban design advice and concepts
2003 – 2004	Great Western Highway	Roads and Traffic Authority	Urban design guidelines for highway upgrade
2003	Kempsey to Eungai Pacific Highway Upgrade	Roads and Traffic Authority	Preparation of photomontages

DATE	PROJECT	CLIENT	ROLE
2002 – 2007	Lane Cove Tunnel	Thiess/John Holland Joint Venture	Architectural services for ventilation stacks - Concept, Detailed Design and Construction
2002 – 2003	Bulahdelah Bypass Pacific Highway Upgrade	Roads and Traffic Authority	Urban design review and design guidelines
2002 – 2006	Westlink M7	Roads and Traffic Authority	Urban design and landscape specification
2001 – 2005	Cross City Tunnel	Roads and Traffic Authority	Tender evaluation
2001 – 2003	Old Windsor Road -Heritage Parkway Corridor Plan	Roads and Traffic Authority	Urban design framework
2001 – 2002	Karuah Bypass Pacific Highway Upgrade	Roads and Traffic Authority	Urban design assessment and advice
2000 – 2001	Cross City Tunnel – Darling Harbour pedestrian access	Roads and Traffic Authority	Assessment of access options
1999 – 2001	Liverpool – Parramatta Transitway Overview Study	Roads and Traffic Authority	Urban design review of EIS
1999 – 2001	Eastern Distributor	Roads and Traffic Authority	Development Application for Residual Lands
1998 – 2000	Cross City Tunnel	Roads and Traffic Authority	Stakeholder consultation
1998	Liverpool – Parramatta Transitway	Roads and Traffic Authority	Schematic design development for Bonnyrigg and Prariewood Stations
1998	Western Sydney Orbital	Roads and Traffic Authority	Urban design
1997	M5 East Motorway	Roads and Traffic Authority	Urban design assessment
1996 – 1999	Eastern Distributor	Roads and Traffic Authority	Urban design concepts and master plans for residual lands
1996	Gore Hill Freeway at Naremburn	Roads and Traffic Authority	Public consultation and urban design studies
1995	Homebush Bay Drive	Roads and Traffic Authority / Public Works Department	Route Selection Study
1994	Eastern Distributor	Roads and Traffic Authority	Urban design and property studies
1994	Epping Road Lane Cove	Roads and Traffic Authority / Lane Cove Council	Options studies and urban design advice
1992	F4 Freeway	Penrith City Council and Blue Mountains City Council	Report on alternative alignments
1990	F2 Freeway	Roads and Traffic Authority	Urban design studies
1989 – 1991	Great Western Highway	Sinclair Knight Partners	Management Plan for highway upgrade and public consultation
1984 – 1985	Glebe Island Bridge	Department of Main Roads	Visual Impact Study for the Western Arterial Environmental Impact Statement
1984	Eastern Distributor	Roads and Traffic Authority	Environmental Impact Statement, including public consultation
1978	Great Western Highway	Roads and Traffic Authority	Urban design input into route selection
1975	Eastern Distributor	Roads and Traffic Authority	Studies of alternative corridors
1974	Western and North-western Freeways	Department of Urban and Regional Development	Corridor selection studies
ROADS			
2011 – current	NSW Rest Area Signage Structures	Roads and Maritime Services	Urban and architectural design
2011 – current	Spit Pedestrian Bridge	Roads and Maritime Services	Urban and architectural design
2010 – 2011	Transit Boulevard Road Type Guidelines	Roads and Traffic Authority	Urban design guidelines
2009 – 2011	Schofields Road Urban Design and Landscape Strategy	Roads and Traffic Authority	Urban design guidelines
2008 – 2011	Richmond Road Upgrade	Medallist Golf Holding and Marsden Park Developments	Urban design guidelines
2008	Eastern Distributor Pedestrian Bridges	Transurban	Visualisation of pedestrian bridge safety screens
2003	M2 Motorway Advertising	Roads and Traffic Authority	Advice related to advertising
2002 – 2006	Guidelines for Advertising	Roads and Traffic Authority	Urban design guidelines for advertising signage
1999 – 2000	Beyond the Pavement	Roads and Traffic Authority	Urban Design Policy and Guidelines

DATE	PROJECT	CLIENT	ROLE
1998	Pedestrian Bridges Lift Assessment	Roads and Traffic Authority	Assessment of pedestrian bridge lifts
1990	Sydney CBD	Department of Transport	Pedestrian, Parking and Traffic Study for the northern area of the CBD
1987	Sydney CBD	Department of Main Roads	East-West movement study
1987	Sydney CBD George Street	City of Sydney Council	Pedestrian improvement studies
1984	Darlinghurst Road, Kings Cross	City of Sydney Council	Design of streetscape improvements
1979	Kyeemagh / Chullora Road	Botany Bay Sub-region Community Advisory Committee	Evaluation of Kyeemagh / Chullora Road proposals
1975	Alfred Street, Circular Quay	City of Sydney Council	Design of streetscape improvements
1971	Railway Square and Tunnel	City of Sydney Council	Design of streetscape improvements
RAIL			
2009	Riverstone Overpass (Loftus Street)	Roads and Traffic Authority	Urban design assessment of crossing options
2008	GCC Station Area Planning	Growth Centres Commission	Concept planning for Transit-oriented Development
2007 – 2008	Riverstone Overpass	Roads and Traffic Authority	Urban design assessment of crossing options
2006 – 2007	Redfern Railway Station Upgrade	Redfern-Waterloo Authority	Upgrade Concept Design Study
2006	Kingsgrove to Revesby Quadruplication Rail Clearways Program	Sinclair Knight Merz for Transport Infrastructure Development Corporation	Urban Design and Visual Assessment
2005	Macdonaldtown Railway Station	Sinclair Knight Merz for Transport Infrastructure Development Corporation	Perspective images
2005	Homebush and Lidcombe Turnbacks	Sinclair Knight Merz for Transport Infrastructure Development Corporation	Urban Design and Visual Assessment
2002 – 2003	Redfern Railway Station	State Rail Authority	Development Strategy
2001	Redfern Railway Station	State Rail Authority	Master Plan
2000 – 2001	State Rail Authority land, Liverpool	State Rail Authority	Master Plan
1999 – 2000	Parramatta to Chatswood Rail Link	Dames & Moore	Review of Parramatta Rail Link Draft EIS and Working Paper
1997 – 2000	Sydney Central Station	State Rail Authority	Access Upgrade and Olympics Refurbishment
1995	Epping Railway Station	State Rail Authority	Concept options
1992	Sydney Central Station	State Rail Authority	Survey and preliminary repairs
1985	State Rail Authority land, Newcastle	State Rail Authority	Development options analysis
TRANSPORT INTERCHANGES			
2008 – 2009	Buranda Transit-Oriented Development	Anthony John Group	Urban Design Report
2008	Baulkham Hills Interchange and M2 Bus Stops	Urbanhorizon for Ministry of Transport	Scoping Study and concept design options
2008	Beverly Hills Interchange Study	Urbanhorizon for Transport Infrastructure Development Corporation and Ministry of Transport	Scoping Study
2006 – current	Southpoint Transit-Oriented Development	Anthony John Group	Urban design and architectural services
2001	Green Square Town Centre	South Sydney Development Corp	Competition design for TOD
2000	Parramatta Rail Link – Parramatta Interchange	Parramatta Rail Link	Options development
1999 – 2000	Parramatta Bus/Rail Interchange and Civic Centre	NSW Department of Transport	Architectural concepts and master planning
1999 – 2000	Burwood Station Interchange	State Transit Authority	Concept Design
1995 – 1996	Liverpool Station Transport Interchange	State Rail Authority	Concept Design and Design Development

DATE	PROJECT	CLIENT	ROLE
TRANSPORT PLANNING			
2009 – 2011	Northwest Growth Centre Road Framework	Roads and Traffic Authority	Urban design framework
2006	Transit Oriented Development Study	Roads and Traffic Authority	Strategies for delivering Transit Oriented Developments
1999 – 2000	Western Sydney Transitway Network Overview Study	Roads and Traffic Authority	Urban design input into route selection and station locations
1988	Central Sydney Public Transport	Urban Transit Authority	Public Transport Options
ARTWORK			
2011 – current	Holbrook Bypass Gateway Marker	Roads and Maritime Services	Artwork treatment of road sign
2010 – current	Tarcutta Bypass Gateway Marker	Tarcutta Hume Alliance	Artwork treatment of road sign
2009 – current	Our Girls Memorial Bridge Artwork Bulahdelah Bypass	Roads and Maritime Services	Artwork treatment of Southern Interchange Bridge safety screen
2009 – 2011	Gateway Design to Ballina	Ballina Bypass Alliance	Artwork treatment of Teven Interchange
2009	Tumbarumba Bridge	Northern Hume Alliance	Artwork treatment of Hume Highway bridge
2006 – 2007	Blacktown Noise Wall Artwork	Roads and Traffic Authority	Artwork concepts and advice on design strategy
2003 – 2009	Eastern Distributor – Three Pedestrian Bridges	Roads and Traffic Authority	Concept design for safety screen artwork on footbridges
BUS DEPOTS			
2005	Kingsgrove Bus Depot	State Transit Authority	Fit-out for new State Transit Offices
1995	Leichhardt Bus Depot	State Transit Authority	
1991 – 1994	Randwick Bus Depot	State Rail Authority	Architectural contract administration
1992	Tempe State Transit Authority Depot	State Transit Authority	Conservation Plan
1990 – 1991	Kingsgrove Bus Depot	State Transit Authority	Refurbishment
1986 – 1989	Tuggeranong Bus Depot	National Capital Development Commission	Urban and architectural design
PORTS			
2008	White Bay Cruise Passenger Terminal	Sydney Ports Corporation	Re-location options study
2007 – 2011	Port Botany Operations Centre	Sydney Ports Corporation	Architectural services
2002	Port Botany	Parsons Brinckerhoff	Perspective views
1997 – 1998	Wharf 8 Passenger Terminal	Sydney Ports Authority	Architectural services
AIRPORTS			
1994	Armidale Airport Terminal	Dumaresq Shire Council	Architectural services
UTILITIES			
2011	Cronulla Waste Water Treatment Plant	Sydney Water	Visual Impact Assessment
2009 – 2010	Malabar Sewage Treatment Plant	Sydney Water	Visual Impact Assessment
2006	Cronulla Pumping Station	Parsons Brinckerhoff	Perspective views
2001	Druitt Street Viaduct Substation	Roads and Traffic Authority	Studies for alternative substation location
2000 – 2002	Cross City Tunnel West End Substation	Roads and Traffic Authority	Architectural design
2000	M5 East Air Quality Monitoring Station	Roads and Traffic Authority	Concept Design and Contract Drawings
INFRASTRUCTURE TENDER SUBMISSIONS			
2011	Pacific Highway Upgrade Tintenbar to Ewingsdale	Leighton Contractors	Urban Design
2010	Hunter Expressway	Leighton Contractors	Urban Design
2005	Pacific Highway Upgrade Tugun Bypass	Queensland Department of Main Roads	Urban Design
2005	Pacific Highway Upgrade Bonville	Leighton Contractors	Urban Design
2004	Pacific Highway Upgrade Brunswick Heads to Yelgun	Leighton Contractors	Urban Design
2004	Albury Bypass	Leighton Contractors	Urban Design



THE TEAM

Nadira Yapa heads Jackson Teece's Urban Design Group. She is supported by an expert team of professionals with strengths in various areas such as design, technical knowledge, contract administration, graphics and presentation, 3-D modeling and documentation.

As a company we are small enough to provide committed, personal service, but large enough to harness the highly-specialised expertise relevant to the urban design process. Each project is assured personal attention by the Director of Urban Design and other senior staff.

For more information on any of the projects in this document, or to discuss a business opportunity, please contact Nadira Yapa, Director of Urban Design at Jackson Teece.

Visit our website at www.jacksonteece.com.



phone 02 9290 2722
email nyapa@jacksonteece.com
mobile 0411 572 471



