

NEWCASTLE PRACTICE PROFILE

JACKSON TEECE



As an introduction to Jackson Teece this brochure takes the reader through a visual history of our creative process by focusing on a single project which utilised the expertise available in both our Newcastle and Sydney offices. In this instance the project is a Seniors Living project providing accommodation for 100 residents.

This project weaves together some of the practice's varied disciplines, such as Urban Design, Heritage, Architecture and Interior Design, to produce a building which responds on many levels to the circumstances of its context.

The project provides High and Low care accommodation designed around a pair of beautifully landscaped courtyards. The curves of the building are a simple response to the contours of the hilltop setting.

This brochure outlines our history, philosophy and key personnel. A wide range of stand alone brochures covers our expertise in our various disciplines and are available on request.

Our proposals always seek to deliver a form that best enhances a project's Environmental Sustainability.

Philosophy

At Jackson Teece our approach to our work is centred on the knowledge, creativity and energy which arises from the interplay of our specialist skills. We are a medium sized practice with offices in Sydney, Newcastle and Brisbane with expertise in Architecture, Infrastructure, Urban Design, Interior Design, Heritage Conservation and Building Diagnostics. Each specialist skill is headed by a committed expert. Forming the core creative team at Jackson Teece, our specialists work together from project conception in a manner which allows each area of knowledge to review, engage and inform the direction of our proposal for a project brief.

Our design philosophy brings a global view of the numerous ways a building, a road, an office, a house, a tunnel or a suburb can interact within its specific urban and geographical context. The resources required to construct buildings, and their subsequent longevity, are key design principles which blend naturally with our market leadership as environmentally sustainable designers. We create projects which are not only functional and responsible, but also inspire and delight.

We provide the skills, experience and lateral thinking inherent in a multi-disciplinary approach in which all the complexities and challenges of each project are considered and solved. This philosophy allows for each of us to gain new insights from our peers, clients and colleagues which adds to our expertise and creativity.

History

Established in 1971 and located in Sydney, Jackson Teece was formed to provide a single entity able to match and service projects over a wide selection of typologies. Quickly gaining success, the practice evolved its philosophy of cross-disciplinary insight and the possible rewards gained by having in-house specialist expertise. Today a new generation of senior personnel, led by Damian Barker and Ian Brodie, has strengthened our capability, maintained our vitality and allowed further expansion into new specialist fields and regional and interstate offices.

Today

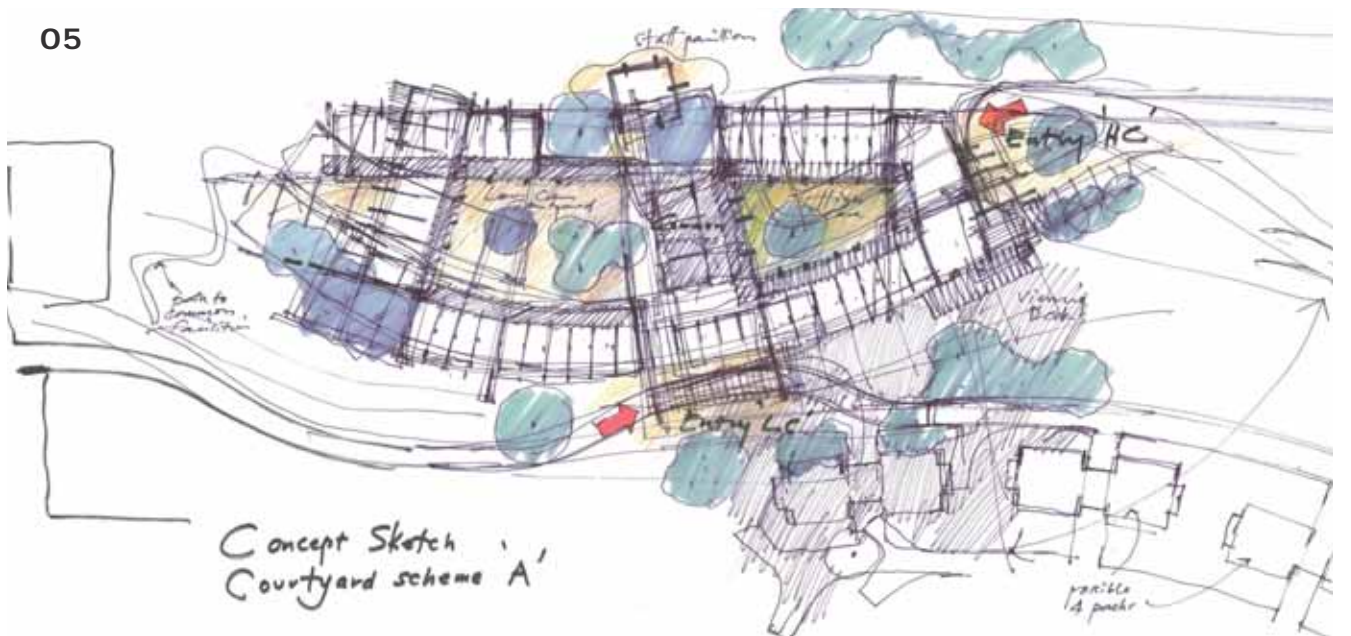
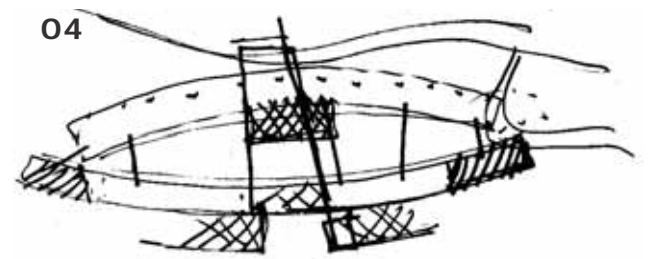
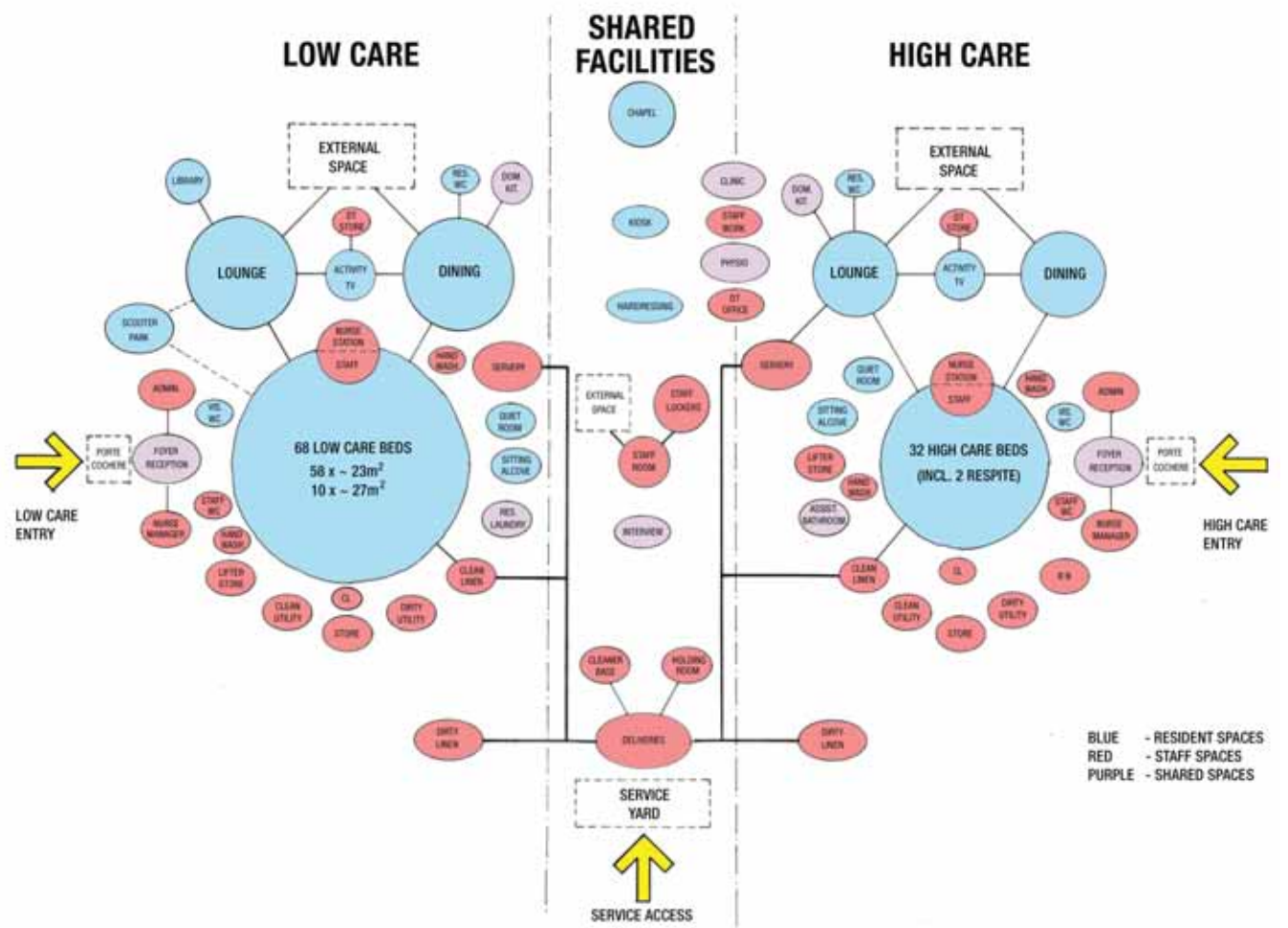
The creative team in our Newcastle office, led by Associate Director John Gow, works hand-in-hand with staff in Brisbane and Sydney on most of our significant projects. We establish project teams hand-picked to suit the circumstances of the brief and to best address the particulars of each project.

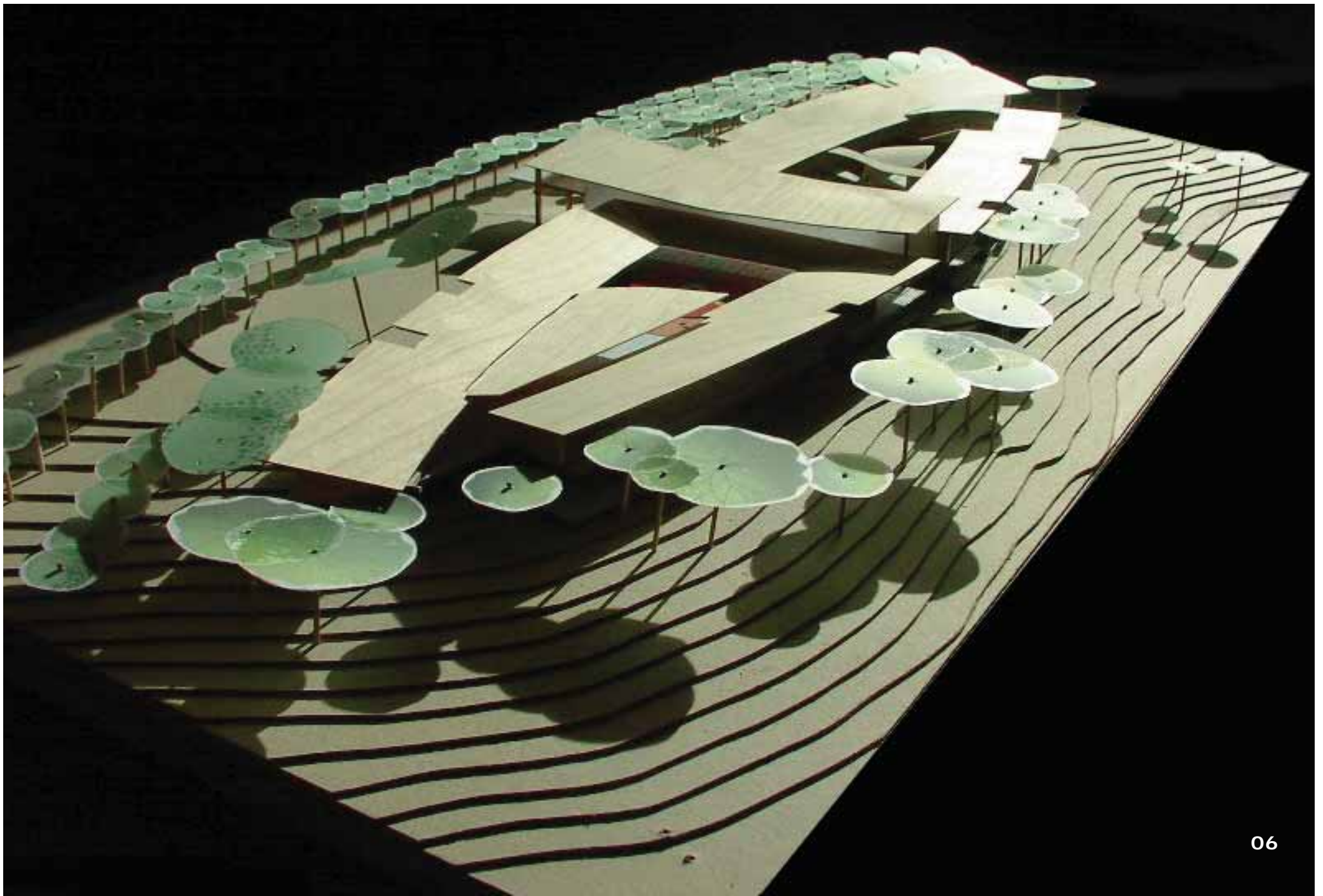
Directors Damian Barker and Ian Brodie, although based in Sydney, have a "hands-on" involvement to some degree in all our projects wherever they are located.

Our Newcastle office provides local focus and knowledge of the Hunter region. Our practice as a whole has the capability and experience to engage in the design of all project types.

When we have a particular project in the Hunter region which requires specialist input, for example in relation to Heritage Conservation, we draw upon our specialists in that area from our Sydney office.

Conversely, our team in Newcastle has an established track record in delivering innovative solutions and detailed documentation for Seniors Living projects. We regularly service projects in this sector located in Sydney and beyond from our Newcastle office.





Architecture

We aim to produce beautiful architecture while resolving approval issues, understanding context, cost-effectiveness, community consultation, materials durability, building process and ongoing maintenance. We work for a broad spectrum of clients with budgets ranging from less than \$500,000 to more than \$400 million.

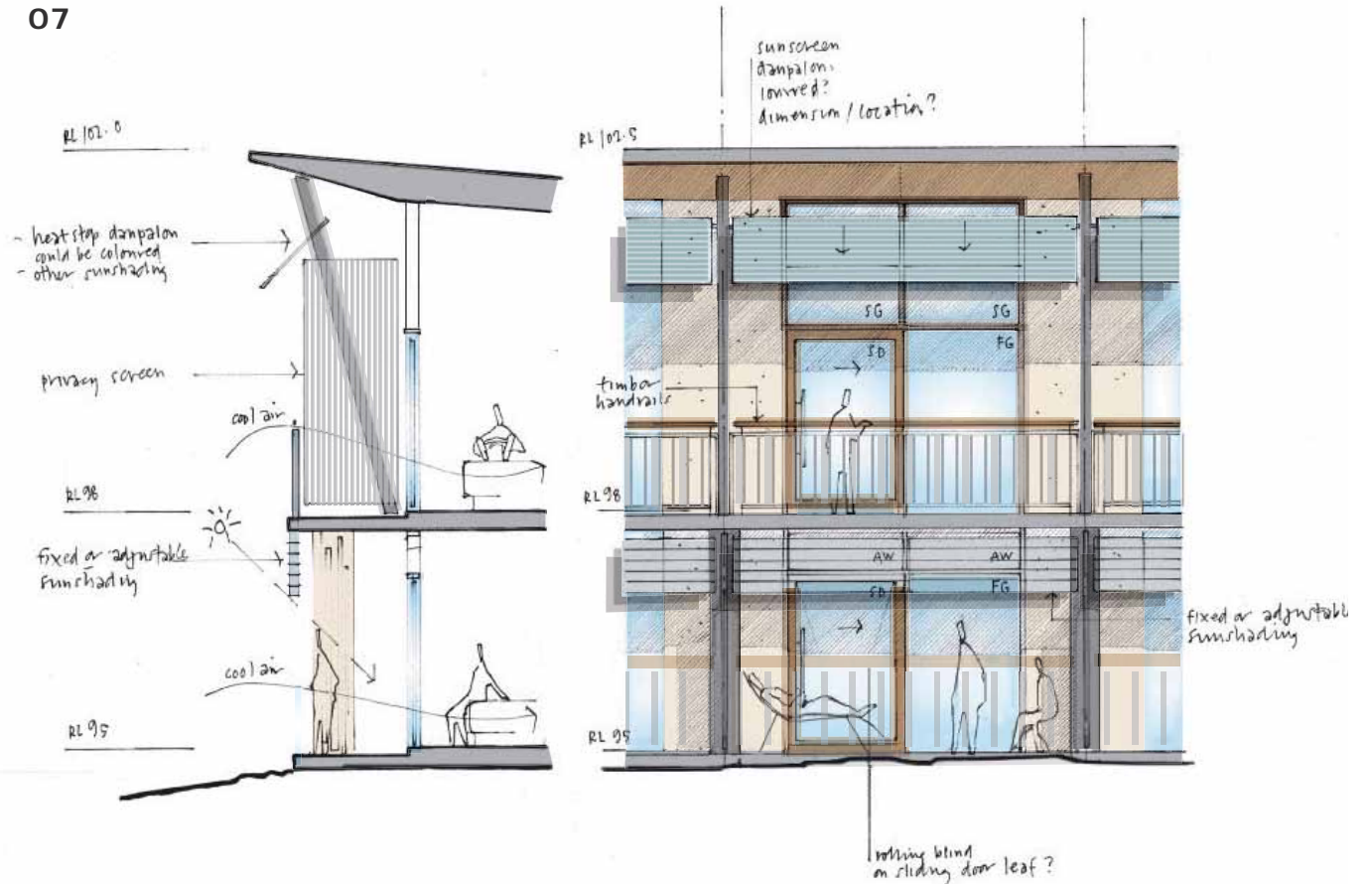
Infrastructure

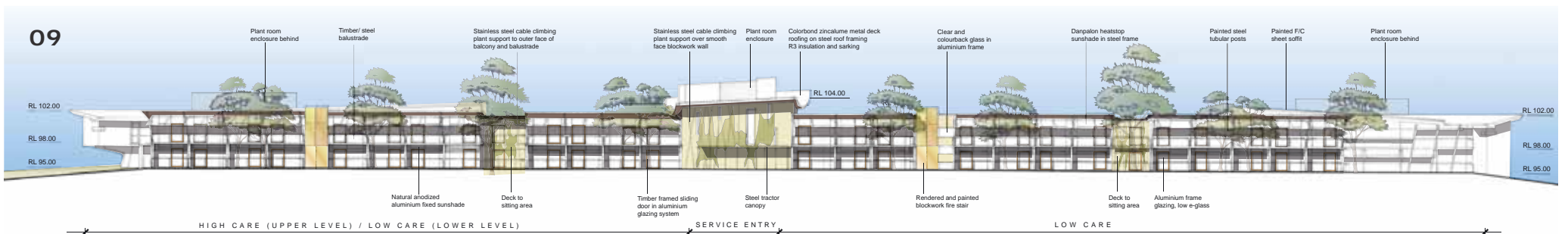
The design skills of architects and urban designers are now recognised to be needed in the design of major infrastructure works. We have worked closely with public authorities, design engineers and contractors on major projects in New South Wales, Queensland and the Australian Capital Territory on projects ranging in value up to excess of \$1b.

Urban design

We contribute to the development of our cities, towns and campus environments and infrastructure, through master planning to design of installations. It has also enabled our building designs to relate well to their contexts to achieve development consensus.

07





professional documentation enables the conceptual project to be realised

Interior Design

We create functional and exciting interiors to both complement our architectural designs and for separate interiors' commissions. We design for commercial and office fitouts, heritage buildings, private residences, medium and high-density residential work, hospitality and retail outlets and health care.

Heritage Conservation

Our approach is based on a sound assessment and understanding of heritage significance and building fabric and results in recommendations for conservation and use/reuse options that are both commercially viable and align with the important heritage qualities of the place.

The collaboration of architects, interior designers and heritage architects has given us a speciality in the refurbishment of existing building stock.

Building Diagnostics

We provide expert analysis of building materials and systems and specify suitable repairs. Working in association with Building Diagnostics Asia Pacific, we have given advice for many high profile buildings in Australia and throughout Asia. We also offer independent preemptive technical reviews of architectural designs to identify errors, omissions, unresolved details and areas of risk, to improve buildability and durability.



Damian Barker
design director

Damian leads the practice's multiple design architectural and urban design teams. His experience includes over 20 years in architecture and has led him to work in Asia, Europe and Australia. He established working relationships with Ken Yeang in Malaysia and Phillip Robert in Paris in the 1990s. As a student he graduated with the top award for a student (RAIA Sliver medal) and continues to win architectural awards, most notably for projects that excel in ESD.

Damian has used his skills to assist the inner city community in which he and his family live and is experienced as a community consultant. He established the JT office in Brisbane after winning the international competition for South Point at South Bank valued at over \$400m.

His work has been published in numerous journals. Damian is committed to his client and architecture.



Ian Brodie
principal

Ian is the longest serving director of Jackson Teece, joining the practice in 1980, and becoming a director in 1985.

His experience is extensive as are his skills. Prior to becoming the joint managing director of the practice Ian has master planned the growth of universities and managed large scale architectural, interior and refurbishment projects in most sectors.

Ian has a leadership role in the firm's practice management and shares the QA manager role. Ian is also involved with the RAIA practice communities and is a Justice of the Peace.

Ian's portfolio includes many of the practice's institutional clients which have been loyal to Jackson Teece for decades.



John Gow
associate director (Newcastle)

John has wide-ranging architectural experience in Australia and Europe, as director of his own practice and now as manager of Jackson Teece Newcastle. He has particular expertise in Aged Care, Seniors Living, Health and Residential projects which enables him to be both a team leader and a valuable advisor across the practice in those fields.

John applies a tenacious attention to detail in his projects and provides clients with a high level of professional service.

In the majority of his projects, John has been closely involved in construction operations on site and has a detailed knowledge of the practical and contractual aspects of the building process.

The people

The company has a well balanced mix of young, dynamic and experienced people. The senior management team comprises:



Paul Brace
director Interior Design

As Interiors Director, Paul leads our specialist interiors team, concurrently managing the firm's Marketing and Brand requirements.

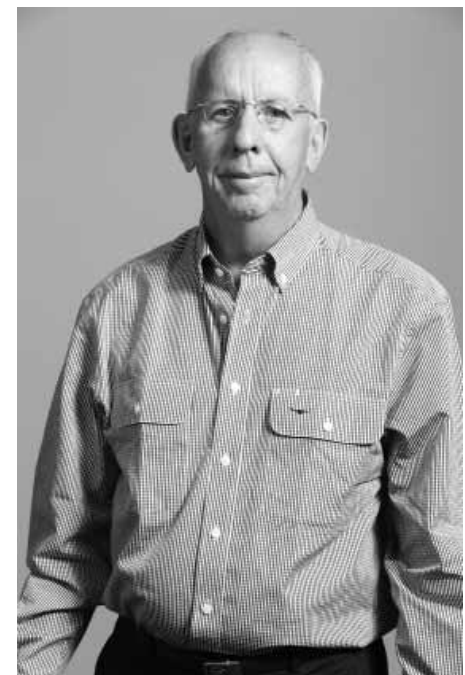
His achievements in design have been recognised by the Royal Australian Institute of Architects as a member of the winning team of the Greenway Award for the Jones Bay Wharf project. He was included in The Bulletin Magazine selection of Australia's 100 most Creative Minds and won the 2004 Dulux Colour Awards Grand Prix Prize.

Paul has extensive experience gained over 15 years ranging from high-end multi-storey apartments, commercial headquarters, hospitality, government, retail projects and numerous individual residences and apartments. All projects have been published extensively.



Nadira Yapa
director urban design

Nadira has 17 years experience in urban design and architecture and has successfully delivered projects in transit oriented development, urban regeneration, major transport infrastructure and greenfield master planning. She is a talented designer and an experienced project team leader and brings to her projects a knowledge base that has been enriched by her extensive international work and research. This includes her hands-on research of the transport and planning system of Curitiba while in Brazil, widely-recognised as a world leader in sustainable land use and transport planning, and her study tour to six cities in the USA investigating Transit Oriented Development projects at various stages of implementation. Her training in Urban Design and Architecture is complemented by studies in Environmental Science. She is also an Accredited Green Star Professional.



Peter McKenzie
director heritage conservation + building diagnostics

Peter specialises in heritage conservation and building assessment projects, his role embracing all aspects of conservation practice. Peter is skilled in working as a team member on complex projects which involve multiple disciplines and developing solutions that satisfy all the criteria – of which heritage conservation is but one. Peter is also an expert in Building Diagnostics and is the partner most involved in managing the Australian work of the long-standing association between Jackson Teece and Building Diagnostics Asia Pacific.



Peter Donn

associate

Peter has an extensive level of practical experience and has specific expertise in a number of highly skilled areas. He practises and promotes a considered method of detailed design and project realisation.



Daniel Hadley

Daniel has developed particular experience in relation to the commercial sector with a number of office projects recently completed. He also plays an important part in supervising the IT and computer network of our Newcastle office.

Awards

Environmentally Sustainable Design

The Architecture Show Magazine and The Francis Greenway Society Green Buildings Award (2001) - Gold Medal

Institute of Languages, University of New South Wales

RAIA (National) Sustainability Award (2000)

Institute of Languages, University of New South Wales

RAIA (NSW) Ecologically Sustainable Design (2000)

- Commendation

Institute of Languages, University of New South Wales

Inaugural RAIA (NSW) Environmental Award for Architecture (1994)

Advanced Technology Centre, University of Newcastle

Urban Design

The Architecture Show Magazine and The Francis Greenway Society Green Buildings Award (2003) - Gold Medal

Martin Bright Steels Site Master Plan

RAIA (NSW) Lloyd Rees Award for Outstanding Civic Design (2000) University of New South Wales Campus Plan

Conservation

National Trust Heritage Awards (2004) - Commendation
11 Barrack Street, Sydney (with Nettleton Tribe Partnership)

RAIA Conservation and Adaptive Re-use (2003)

- Commendation

11 Barrack Street, Sydney (with Nettleton Tribe Partnership)

The Australian Property Institute's (NSW Division) Excellence in Property Award – Property Development Category (1999)

Customs House, Sydney

National Trust Heritage Award, Tourism Category (1999)
The Sydney Harbour Bridge for BridgeClimb

RAIA Award for Architecture Conservation/Adaptive Re-use (1999)

The Sydney Harbour Bridge for BridgeClimb

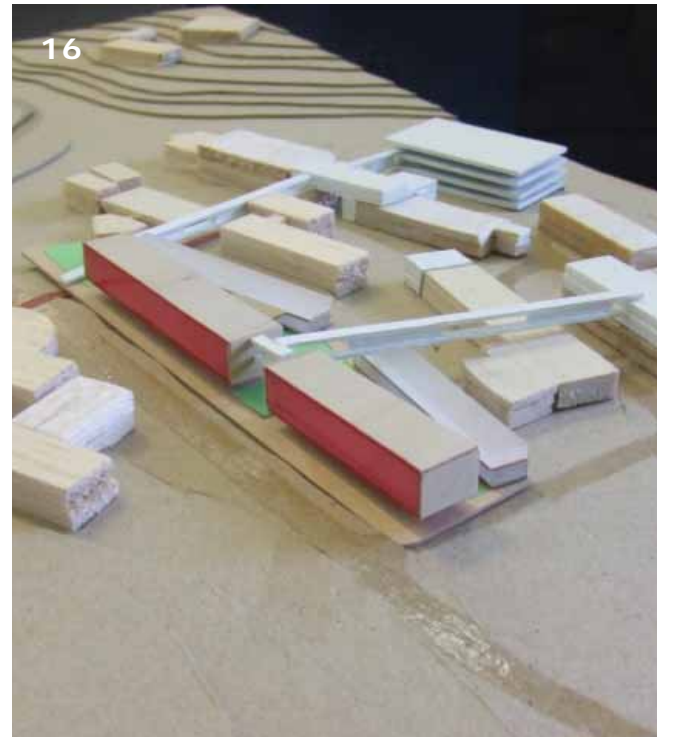
Communicating a project's aims, ambitions and requirements is the key to success



Service Delivery

Successful design outcomes require close collaboration between designer and client. By working through an iterative process with the client, in which possibilities are explored and preferred solutions chosen, and injecting our high level of design skills, we are able to produce designs which work on many levels – functionality, beauty, economics and sustainability.

Our multi-disciplinary approach to projects is a key strength. We have a strong track record in successfully delivering complex projects which require sensitive and often conflicting issues to be resolved. Experienced designers are able to resolve planning or design detail issues and provide quality documentation suited to its purpose and budget.



Quality Assurance

All staff follow the procedures of our quality system, which is fully third-party certified to comply with Australian Standard AS/NZS ISO 9001 – 2008

For more information on any of the projects in this document or to discuss a business opportunity please contact Mr John Gow Newcastle Practice Director of Jackson Teece.



phone 02 4969 5199
email jgow@jacksonteece.com
mobile 0419 716 616

01	Entry Seniors Living Facility Carrington, Camden, NSW	10	Construction of Building Seniors Living Facility Carrington, Camden, NSW
02	Carrington Facility Uses & Relationships Diagram Seniors Living Facility Carrington, Camden, NSW	11	Central courtyard & chapel Seniors Living Facility Carrington, Camden, NSW
03 & 04	Initial concept sketch plans Seniors Living Facility Carrington, Camden, NSW	12	Y - Apartments Newcastle, NSW
05	Sketch plan progression Seniors Living Facility Carrington, Camden, NSW	13	309 Charlestown Road Charlestown
06	Model of final building form Seniors Living Facility Carrington, Camden, NSW	14	95 Pacific Highway Charlestown
07	Detail Elevation & Section of Skin Seniors Living Facility Carrington, Camden, NSW	15	Active River / Baker Park Masterplan Wyong
08	Detailed Diagramatic Plan Lower Level Seniors Living Facility Carrington, Camden, NSW	16	Australia Energy Innovation Centre Newcastle, NSW
09	Northern Elevation Seniors Living Facility Carrington, Camden, NSW	17	Dockside Townhouses Carrington, Camden, NSW
		18	95 Pacific Highway Charlestown
		19	Bellevue Apartments Newcastle West

Current Major Projects

Australian Energy Innovation Centre
Carrington Centennial Care
Hippocrates Fronditha Care
Dockside
95 Pacific Highway
309 Charlestown Road
Y - Apartments
Birubi Point Surf Club Function Centre
Priority Research Centre for Energy
250 Pacific Highway
Club Marconi Seniors Living
DOCS Greenhills
Warners Bay Sports Club
Castellorizon Club
Beresford St Apartments & Commercial
Active River / Baker Park, Wyong Masterplan