

# URBAN DESIGN

JACKSON  
MITEE  
CE





WWW.JACKSONTEECE.COM



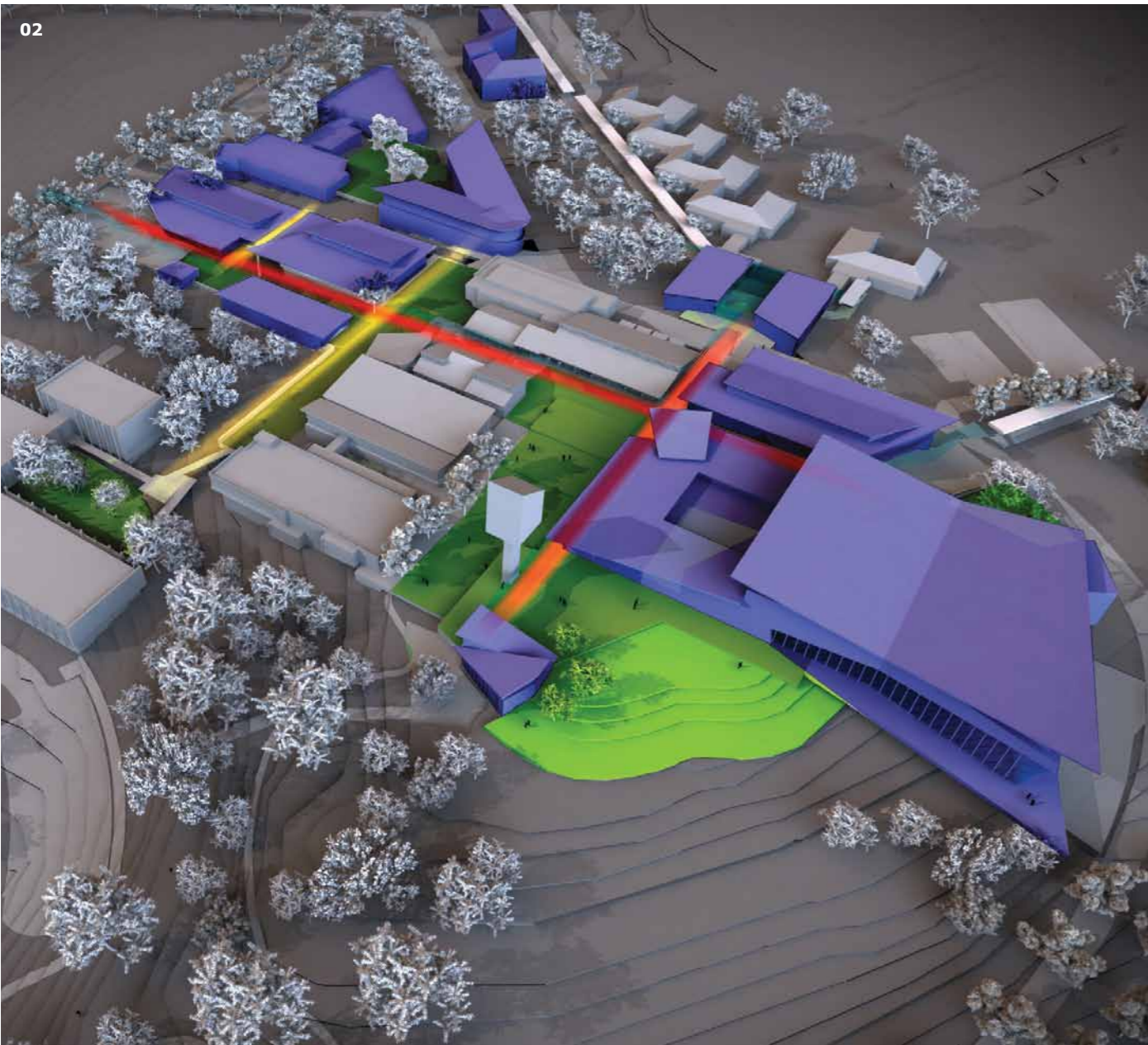
Cover + 01 The Boulevard Transit  
Oriented Development, Buranda, QLD

Jackson Teece is a multi-disciplinary design practice which specialises in providing our clients with a 'one-stop shop' for design services in complementary fields of expertise to deliver their projects. Our expertise includes Urban Design, Master Planning, Architecture, Heritage Conservation, Infrastructure and Building Diagnostics.

Our Urban Design and Architectural personnel work in a fully integrated, holistic manner. This provides the skills, experience and lateral thinking inherent in a

multi-disciplinary approach in which all the complexities and challenges of each project are considered and solved.

Established in Sydney in 1971, the company employs around 50 staff in offices in Sydney, Newcastle and Brisbane.



02 Charles Sturt University, Orange Campus Master Plan, NSW  
 03 The Boulevard Transit Oriented Development, Buranda, QLD

*Design is the creative focus of a structured process*

*We create stimulating and viable places – real value for the client, real benefits for the community*

Our passion for Placemaking is applied across the full spectrum of urban design, including:

- Public Realm Design
- Educational Campuses
- Aged Care
- Urban Regeneration / Town Centres
- Transit Oriented Development
- Transport and Infrastructure
- Greenfield sites
- Public Artwork

In these areas we provide the full range of services, including:

- Master Plans and Strategic Plans
- Concept and Detailed Design and Documentation
- Feasibility Studies and Site Assessment Studies
- Design Guidelines
- Visual Impact Assessments

The breadth of our project work demonstrates the versatility of our practice and our ability to deliver on a range of scales from large strategic projects to small public space design.

## OUR PHILOSOPHY

### Design Approach

Good design is more than a good looking plan. Quality in urban design is achieved when a place inherently works because of its considered response to a set of complex and often competing demands. Jackson Teece staff are united by a common sense of purpose and passion to create places that are beautiful, functional and deliverable.

### Collaboration and Engagement

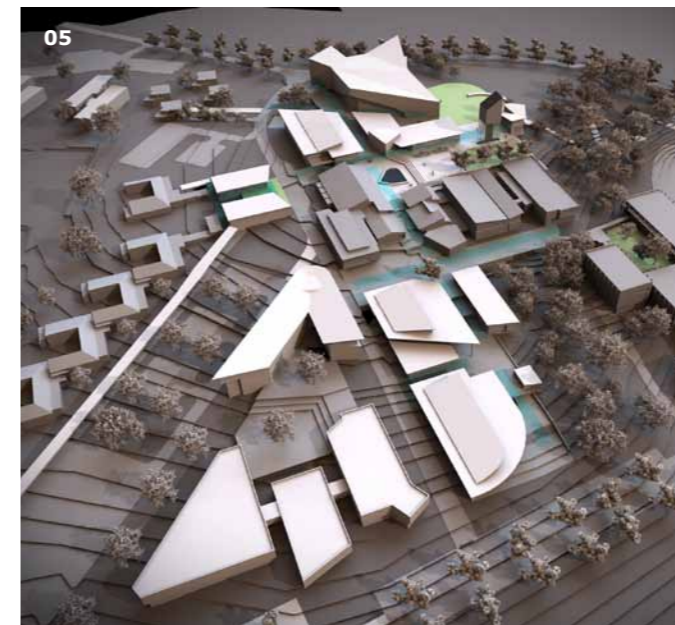
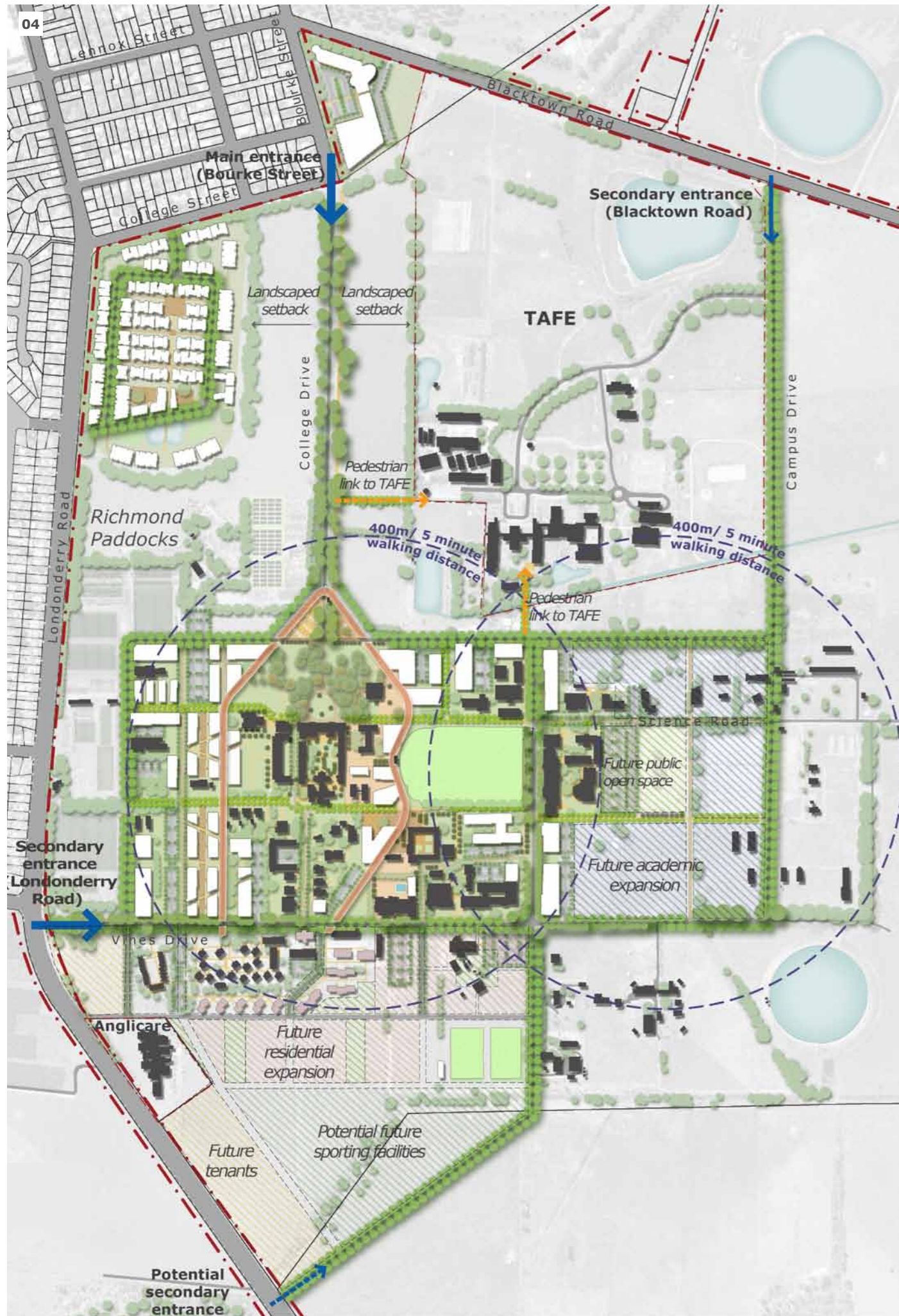
A collaborative approach is the cornerstone of our design process. The creation of a viable and engaging urban environment requires the combined input of numerous skills and knowledge from the key stakeholders including the client, community, public agencies, and other discipline experts.

Coordinated teamwork resolves diverse and even conflicting priorities and leads to timely approvals. The result is common stewardship of an idea resulting in long-term ownership of the project by stakeholders.

### Sustainability in Urban Design

Ecologically Sustainable Design (ESD) principles apply to all our projects and disciplines as a matter of course – this is at the core of the Jackson Teece ethos. Many of our staff have a professional background in sustainability related studies.

ESD principles are incorporated into all of our Master Plans – particularly in relation to water and energy efficiency, stormwater management and sustainable transport to ensure that these issues are considered from the critical early design stage through to implementation.



04 University of Western Sydney, Hawkesbury Campus Master Plan, NSW  
 05 Charles Sturt University, Orange Campus Master Plan, NSW  
 06 East Village Mixed Use Precinct, Brisbane, QLD  
 07 Charles Sturt University, Orange Campus Master Plan, NSW

*A vibrant public realm is vital to the health of a community – it is both a facilitator and backdrop to social interaction; the connective tissue that binds the city together*

## EXPERTISE

### Public Realm Design

The essential elements of a successful public realm are complex. Jackson Teece has considerable experience in the area, particularly with regard to complex mixed use, transit oriented developments and campus environments.

#### Selected Projects:

- ARV Castle Hill Village Centre Public Realm, NSW
- Charles Sturt University Orange Campus Student Precinct Design, NSW
- Southpoint Mixed Use Transit Oriented Development Public Realm, South Bank, QLD
- East Village Mixed Use Precinct Public Realm, Cannon Hill, QLD
- South Bank Mixed Use Precinct Public Realm, QLD

### Educational Campus Master Planning

We have long been involved in the master planning and architectural design for the tertiary education sector in particular, ranging from urban to rural campuses.

Extensive stakeholder consultation is carried out throughout the design process to ensure that all inputs are incorporated and that all issues are addressed. We work with the existing fabric and essential nature of the campuses to establish a new structure that enhances legibility and identity.

#### Selected Projects:

- University of New South Wales, Kensington Campus, NSW
- University of Western Sydney, Hawkesbury Campus, NSW
- Nirimba Education Precinct, NSW
- University of Newcastle, Callaghan Campus, NSW
- University of Tasmania, Hobart and Launceston Campuses, TAS



*Well-designed environments tailored to the needs of the aged is vital for residents to lead fulfilling and healthy lives*

**Aged Care Master Planning**

The increasingly aging Australian population is a demographic trend that will have significant implications for society and economic growth. Jackson Teece has developed special expertise in the planning and design of contemporary aged care communities and facilities.

Our design approach integrates master planning and architectural design in an iterative process, to create state of the art places that are based on the most current research on aged care.

*Selected Projects:*

- Anglican Retirement Villages, Castle Hill, NSW
- Carrington Centennial Care, Camden, NSW
- Oran Park Lifestyle Village, NSW
- Strathearn Aged Care Village, NSW
- St. Josephs Hospital Master Plan, Auburn, NSW



**08 + 09** Neringah Hospital Site Master Plan, Wahroonga, NSW  
**10** South Bank Transit Oriented Development, Brisbane, QLD  
**11** Southpoint Mixed Use Development, South Bank, QLD  
**12** Castle Hill Village Centre Master Plan, NSW



**Urban Regeneration and Town Centre Redevelopment**

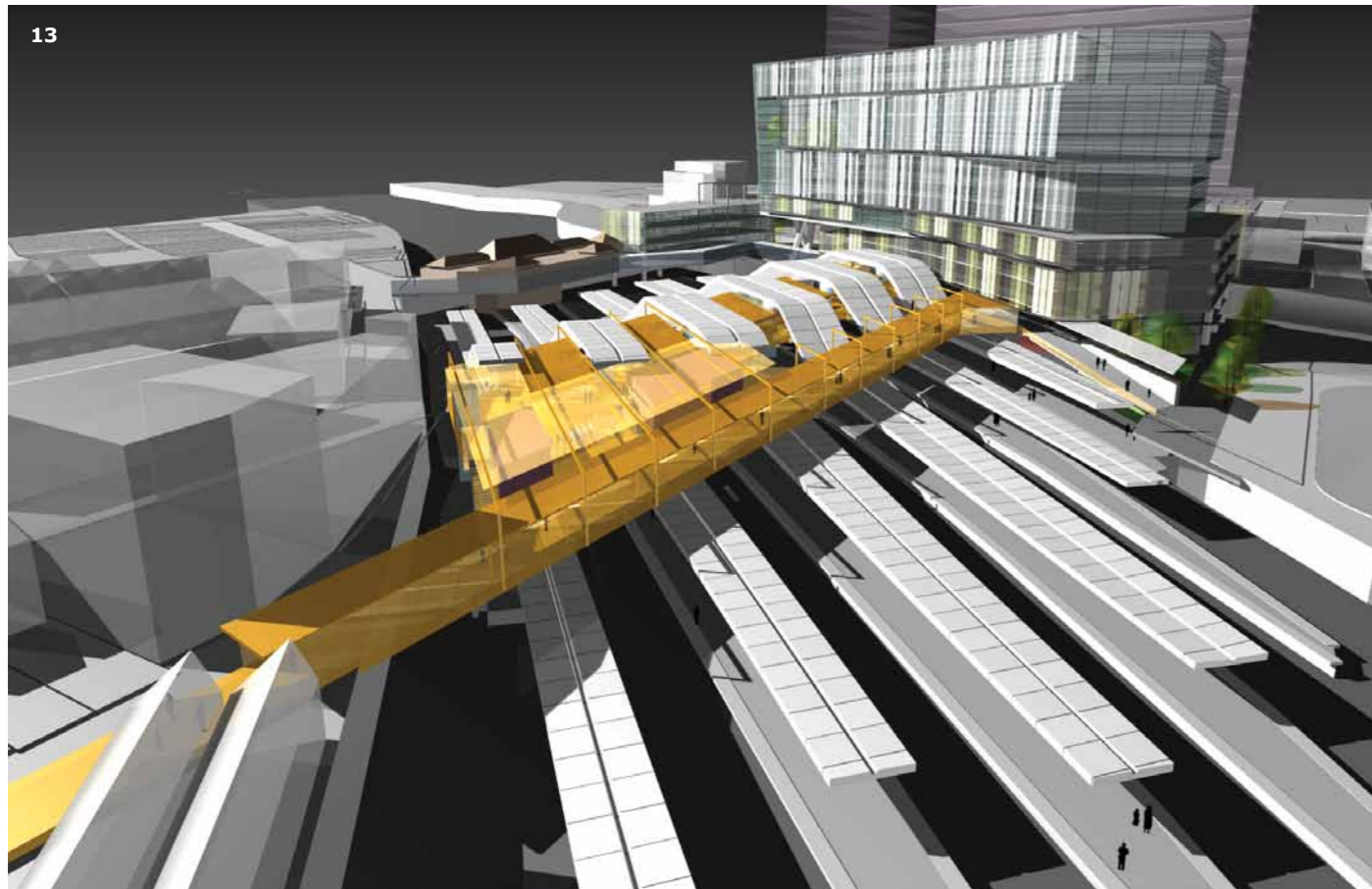
Successful urban regeneration requires an in-depth appreciation of the extant physical, social and economic infrastructure that underlies existing and proposed communities to ensure sustainable urban growth.

A sophisticated understanding of how these elements interlink enables us to propose viable solutions that provide improved levels of amenity for the inhabitants, users and businesses of a neighbourhood or town centre.

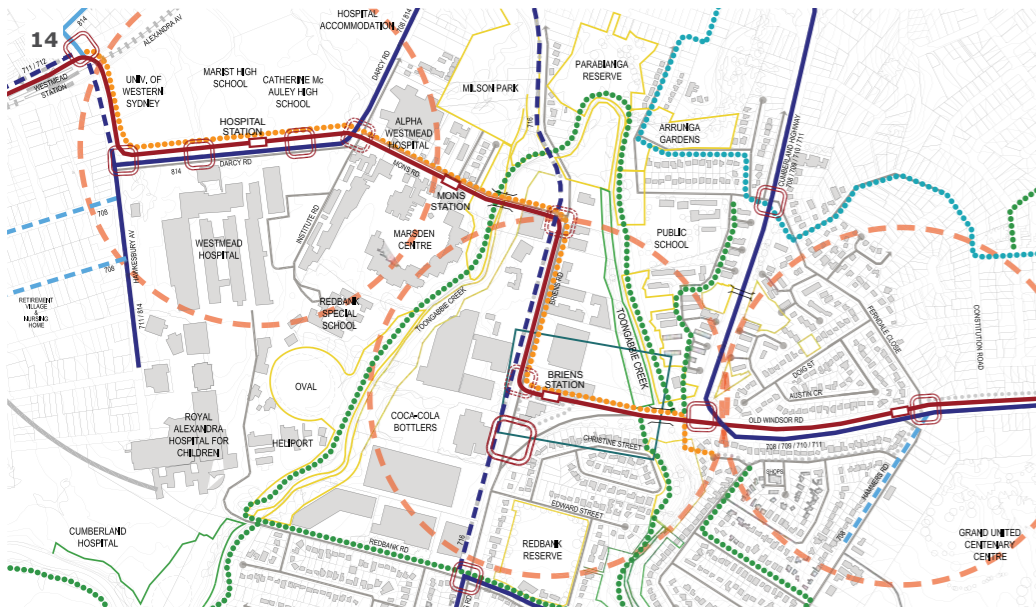


*Selected projects:*

- Southpoint Mixed Use Transit Oriented Development, South Bank, QLD
- East Village Mixed Use Precinct, Cannon Hill, QLD
- Baker Park & Active River Precinct, Wyong Town Centre, NSW
- Martin Bright Steels Mixed Use Development, Sydney, NSW
- Pyrmont Bay Master Plan, Sydney, NSW



13 Redfern Railway Station Development Strategy, NSW  
14 North West Transitways, Sydney, NSW

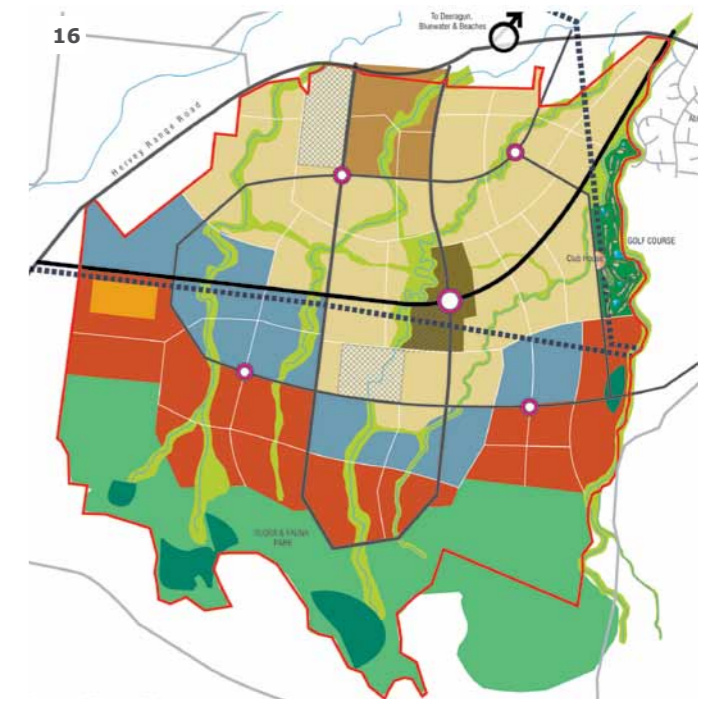


### Transit Oriented Development (TOD)

TOD planning refers to the linking of public transport infrastructure and services with land use strategies to achieve sustainable urban areas and healthy communities. We have the skills and experience to bring the various stimuli together to deliver viable and robust plans.

#### Selected Projects:

- Southpoint Mixed Use TOD, South Bank, QLD
- The Boulevard TOD, Buranda, QLD
- Redfern Railway Station Development Strategy, NSW
- Bus Corridor TOD Study (in association with the University of Sydney), NSW
- North West Transitways, Sydney, NSW



15 North Kellyville Precinct Plan, North West Growth Centre, Sydney, NSW  
16 Glenarvon Mixed Use Development, Townsville, QLD  
17 Edmondson Park Precinct Indicative Layout Plan, South West Growth Centre, Sydney, NSW



### Greenfield Sites

Achieving good outcomes in Greenfield development requires a careful consideration of residential densities, employment uses, and the provision of social and physical infrastructure services and public transport at the early stages of development.

Collaborative design development with other disciplines is key to ensuring the establishment of integrated and robust new communities.

#### Selected Projects:

- North Kellyville Precinct, NSW
- Edmondson Park Precinct Indicative Layout Plan, NSW
- Glenarvon Mixed Use Development, Townsville, QLD
- Camden Valley Golf Resort, NSW
- Picton Equestrian Residential Estate, NSW



18 - 20 North West Transitways,  
Sydney, NSW  
21 Ballina Bypass, Pacific Highway  
Upgrade, NSW

### Transport and Infrastructure

Infrastructure projects including road, railway and public transport, are not only significant interventions in urban areas and the landscape but also important in terms of their contribution to the public realm. We have broad and extensive experience in the urban design of transport infrastructure across Australia.

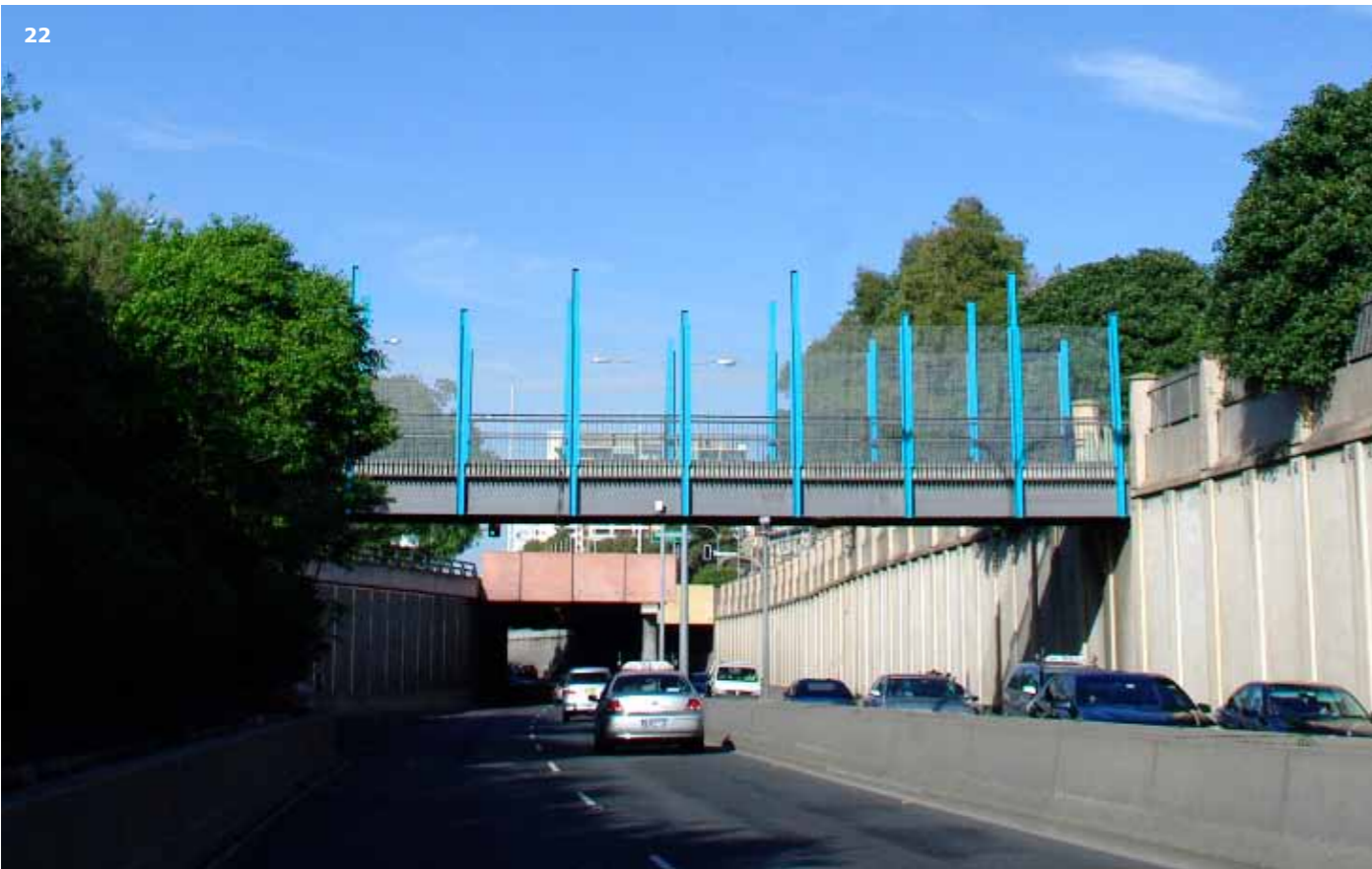
We take great care to create a strong sense of 'place' that is inspired by the surrounding context, and apply our skills to minimise impacts upon affected communities.

Further information about the services we provide is available in our separate brochure on infrastructure works.

#### Selected Projects:

- Eastern Distributor (Concept Design and Design Review), NSW
- Ballina Bypass Pacific Highway Upgrade (Concept, Detailed Design and Construction), NSW
- Northern Hume and Tarcutta Hume Highway Upgrades (Concept, Detailed Design and Construction), NSW
- North West Transitways, Sydney, NSW
- Sapphire to Woolgoolga Pacific Highway Upgrade, NSW





22



25



26



27

22 + 23 Three pedestrian overbridges on Eastern Distributor, Sydney, NSW  
 24 Spit Pedestrian Bridge Concept Design, Sydney, NSW  
 25 The Halfway Marker – Tarcutta Bypass, Hume Highway, NSW  
 26 Tarcutta Town Entry Signage, Hume Highway, NSW

27 Rest Area Signage Structure, NSW  
 28 + 29 Gateway to Ballina at the Teven Interchange for the Ballina Bypass Alliance, NSW  
 Next page 30 Tumbarumba Bridge on the Hume Highway for the Northern Hume Alliance, NSW

**Public Artwork**

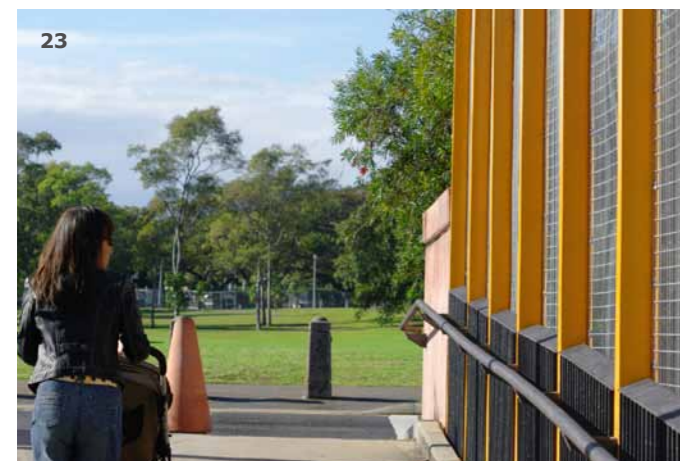
We design and deliver artwork pieces from concept design to installation. The works may be stand-alone pieces, integrated with the public space design, or integral to various functional structures. Our artworks are designed to tell a story, delight and enrich the experience of public space – qualities inherent to Place Making.

Our artworks often originate from a functional requirement such as the need for a gateway/entry statement, wayfinding and orientation, provision of a visual barrier and cladding of a bridge pier. Sometimes they are a response to certain attributes of the context such as its history or identity.

We also prepare Artwork Strategies often in relation to the master planning work we undertake. A successful Place Making exercise is often the result of the considered integration of many elements including the circulation network, built elements, landscape and artwork.

*Selected Projects:*

- Tumbarumba Bridge on the Hume Highway for the Northern Hume Alliance, NSW
- Three pedestrian overbridges on the Eastern Distributor, NSW
- Gateway to Ballina at the Teven Interchange for the Ballina Bypass Alliance, NSW
- Rest Area Signage Structure, NSW



23



24



28



29



*The spirit of collegial collaboration is the hallmark of our design approach*

#### **Client Service**

Under the direction of Nadira Yapa, Director of Urban Design, we practice a culture that propagates a high standard of client service. The enthusiasm and professionalism of the individuals in our team has often led to achieving project outcomes that break the mould and add value to the client brief.

Many of our urban designers are also qualified architects that work closely with the Jackson Teece architectural team. This dual understanding of scales of development – the design of individual buildings and the spaces that surround them, and the understanding of how large-scale developments fit within a regional culture – makes us uniquely qualified to offer our clients an in-depth service.

#### **Technical Capability**

The breadth and diversity of expertise at Jackson Teece ensures that each project is rigorously investigated to develop comprehensive solutions that elegantly resolve the often contradicting demands of a project.

The use of 3-D modelling is a core part of our design approach, allowing us to better assess the merits of our ideas as proposals are developed. Our in-house graphics and visualisation department enables us to produce high quality plans and diagrams, photomontages, 3-D imagery and drive/walk/fly-through animations.



## THE TEAM

Nadira Yapa heads Jackson Teece's Urban Design Group. Damian Barker, as the Design Principal of Jackson Teece, also has a major involvement in the design stages of the projects, particularly in integrating architectural design and ESD strategies.

As a company we are small enough to provide committed, personal service, but large enough to harness the highly-specialised expertise relevant to the urban design process. Each project is assured personal attention by the Director of Urban Design and other senior staff.

For more information on any of the projects in this document, or to discuss a business opportunity, please contact Ms Nadira Yapa, Director of Urban Design at Jackson Teece or Mr Damian Barker, Design Principal of Jackson Teece.

Visit our website at [www.jacksonteece.com](http://www.jacksonteece.com).



phone 02 9290 2722  
email [nyapa@jacksonteece.com](mailto:nyapa@jacksonteece.com)  
mobile 0411 572 471



phone 02 9290 2722  
email [dbarker@jacksonteece.com](mailto:dbarker@jacksonteece.com)  
mobile 0411 545 773



